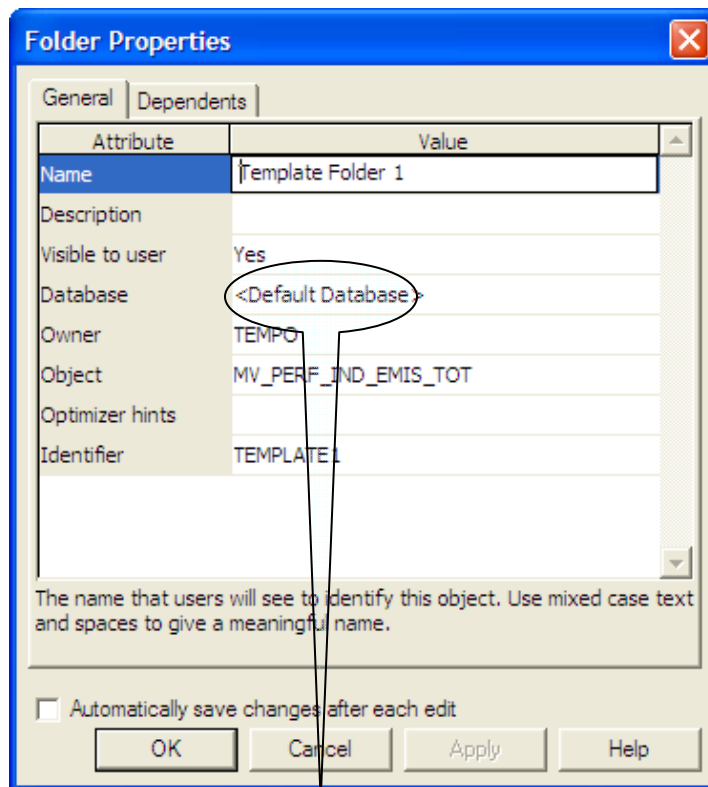


Accessing data across a database link

To access data across a database link using Discoverer Admin, use the following workflow:

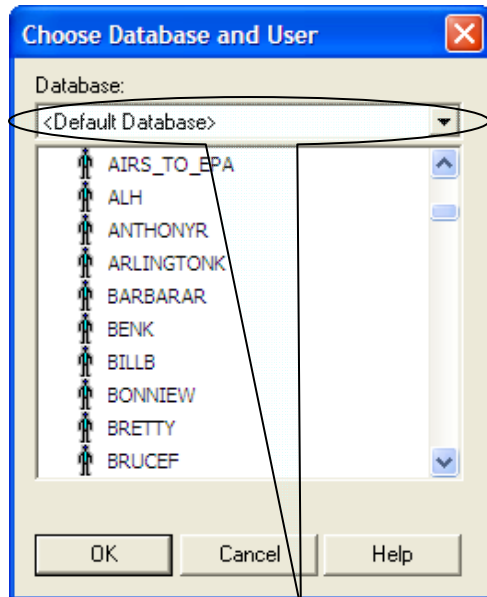
1. Determine the database link.
2. Determine the owner of the data.
3. If the owner's schema does not exist in the local database, use Discoverer's normal Import folder from database procedure.
4. If the owner's schema does exist in the local database, continue from here.
5. Open the Master business area.
6. Locate and click on the [Template Folder](#) heading.
7. Press **CTRL-C**.
8. Click on the [Master](#) business area heading.
9. Press **CTRL-V** to paste a new copy of the template.
10. Right-click on the copy; and from the pop-up list select [Properties](#).
11. Rename the folder and give it a new identifier.



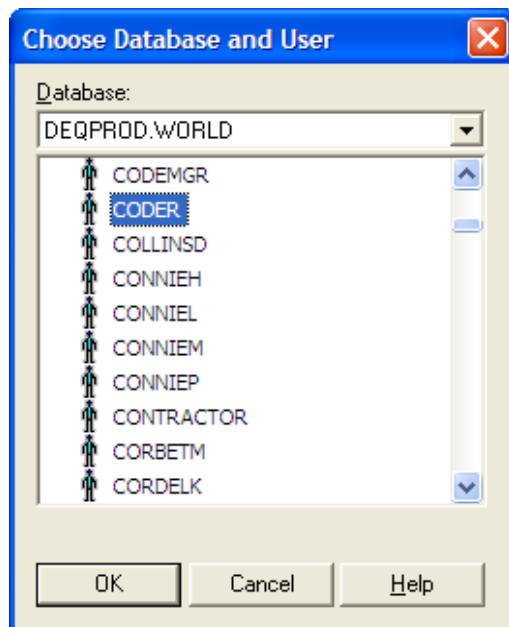
12. Click on [<Default Database>](#).

Accessing data across a database link

13. The following [Choose Database and User](#) dialog box will open.



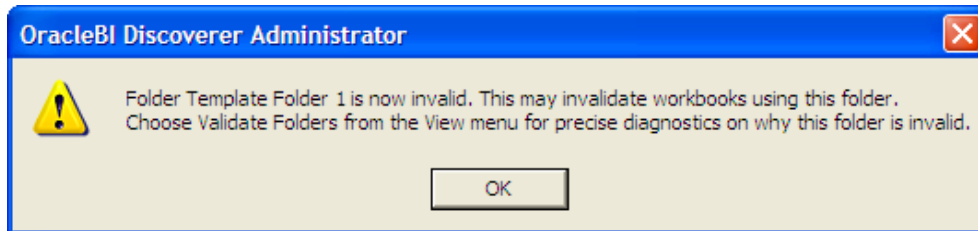
14. Click anywhere in [<Default Database>](#) and from the drop-down list select the actual database that you want to use. The system will display a list of all users in the new database.



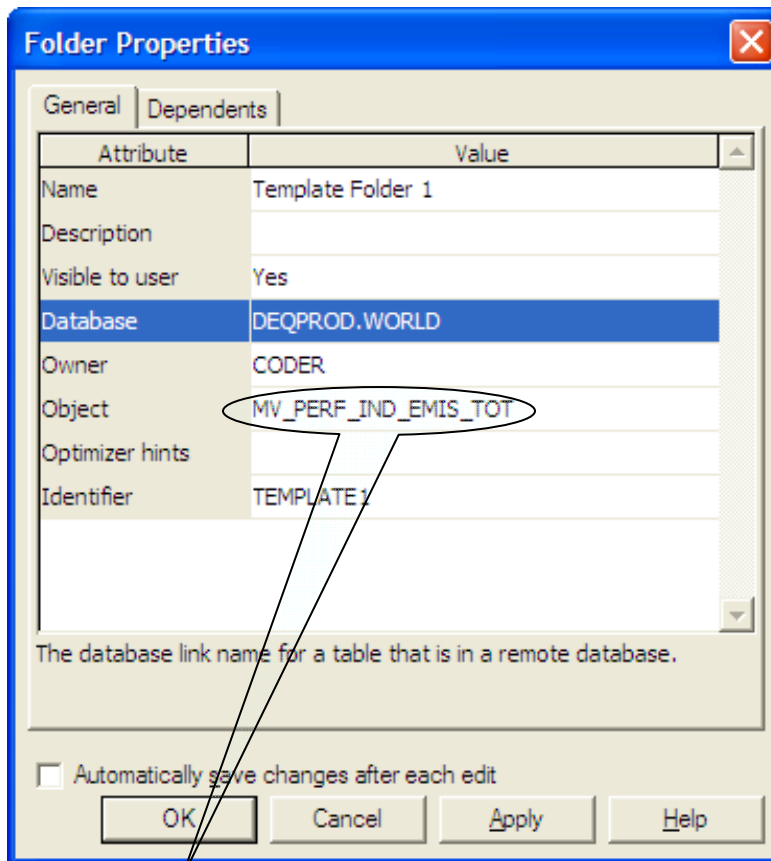
15. From the list of users, select the owner that you want to work with, and then click **OK**.

Accessing data across a database link

16. When Discoverer displays the following message, click **OK**:



17. The **Folder Properties** dialog box will now have the **Database** and **Owner** properties populated, like this:



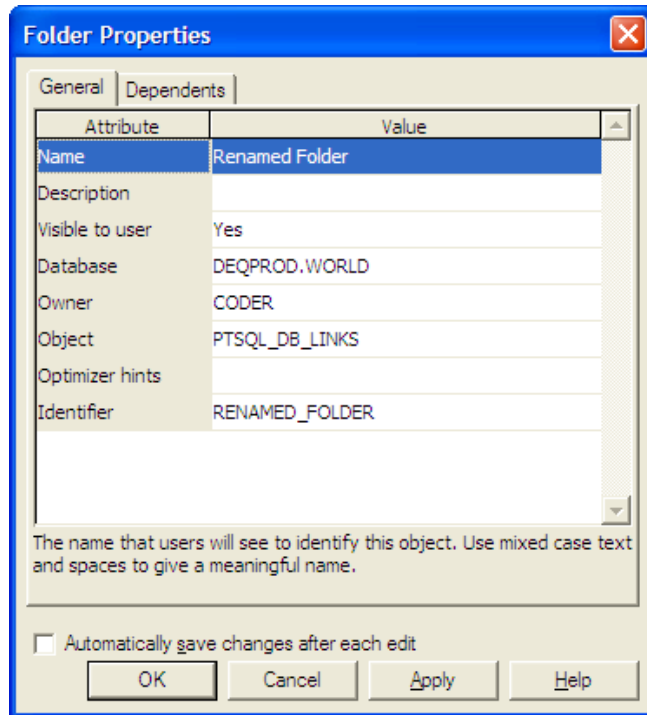
18. Click in **Object**. Discoverer will display the **Choose Table or View** dialog box, with the **Owner** selected in step 15 highlighted.

19. Click the **+** key alongside the **Owner**. Discoverer will now display a list of all database tables and views owned by the user you selected.

20. From the list of objects, select the object you want to import, and then click **OK**.

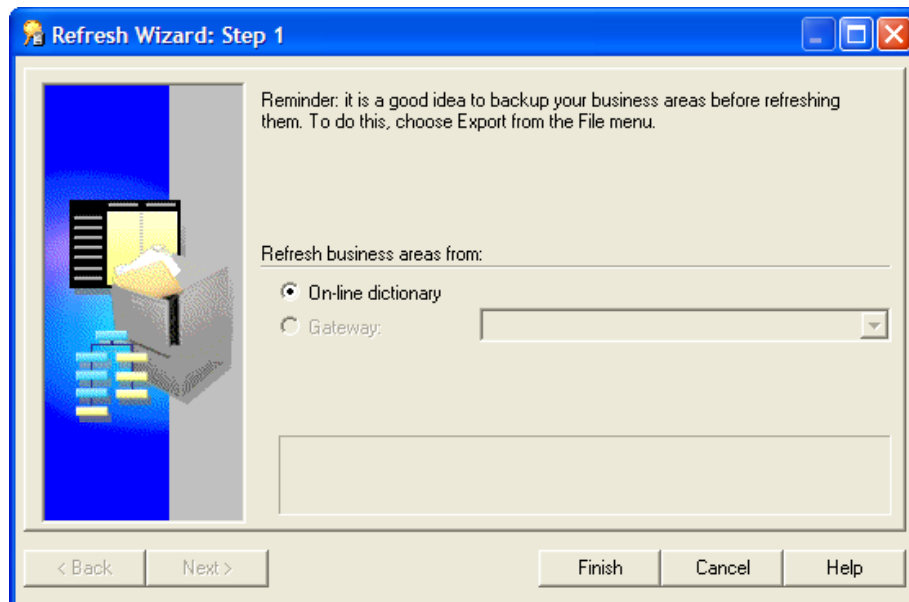
Accessing data across a database link

21. The final settings on the **Folder Properties** dialog box should look like this:



22. Click **OK**.

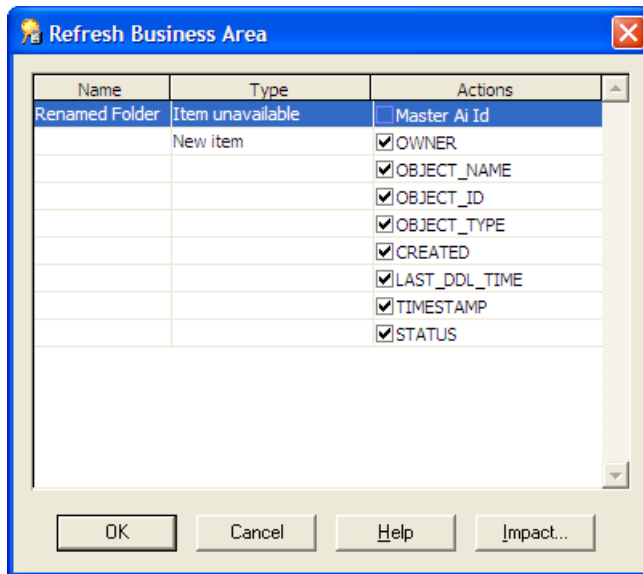
23. Right-click on the new folder; and from the pop-up list select **Refresh**.



24. As you only have one option, click **Finish**.

Accessing data across a database link

25. Discoverer will now import the new data definitions and present you with a screen like this:



26. The item called Master Ai ID may or may not be available. If it exists in the new table you are fine. If it does not exist you will see it flagged as being unavailable, as in the diagram above. If Discoverer does flag Master Ai ID as being unavailable you need to check the box alongside.

27. To complete the refresh, click **OK**. Discoverer will refresh the folder and it will now be available for use within your business area.